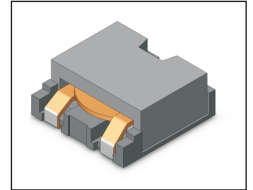


# SMT Power Inductor

## HMU1056H Type

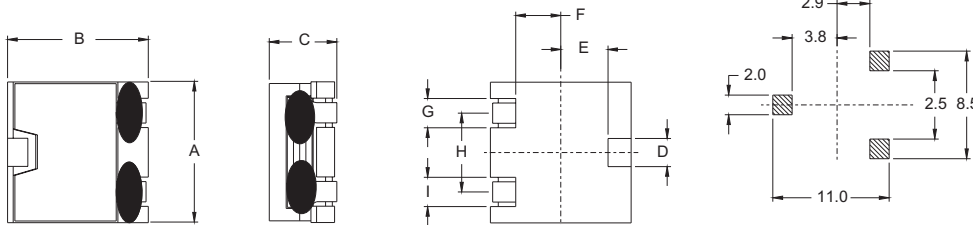
### Features

- RoHS compliant.
- Low profile, SMD type.
- High current.
- Magnetic shielded.
- High energy storage and low DCR.
- Provided with embossed carrier tape packing.
- Ideal for power source circuits, DC-DC converter, DC-AC inverters inductor applications.
- In addition to the standard versions shown here, customized inductors are available to meet your exact requirements.



### Mechanical Dimension :

### RECOMMENDED PAD PATTERNS



UNIT : mm/inch  
 A = 10.40 / 0.409 Max.  
 B = 10.40 / 0.409 Max.  
 C = 5.60 / 0.220 Max.  
 D = 1.40 / 0.055  
 E = 3.80 / 0.150  
 F = 2.90 / 0.114  
 G = 2.60 / 0.102  
 H = 5.50 / 0.217  
 I = 2.60 / 0.102

### Electrical Characteristics : At 25°C : 100KHz, 1V

PART NO.	L <sup>1</sup> ( $\mu$ H)	DCR (m $\Omega$ ) MAX	I <sub>RATED</sub> <sup>2</sup> (A dc)
HMU1056H-R15	0.15	1.7	19.0
HMU1056H-OR3	0.30	2.4	17.7
HMU1056H-OR5	0.50	4.1	13.0
HMU1056H-OR8	0.80	5.3	11.2
HMU1056H-1R2	1.20	7.5	9.0
HMU1056H-1R5	1.50	10.5	7.8
HMU1056H-2R0	2.00	12.4	7.4
HMU1056H-2R5	2.50	18.0	6.2
HMU1056H-3R0	3.00	23.8	4.9

1. Tolerance of inductance : 0.15~0.30 $\mu$ H  $\pm$  30% 0.50~3.00 $\mu$ H  $\pm$  20%
2. I<sub>RATED</sub> is the DC current which cause the inductance drop less than 35% (20% typical) of its nominal inductance without current and the surface temperature of the part increase less than 45°C.
3. Operating temperature : -20°C to 105°C ( including self-temperature rise ).



**DELTA ELECTRONICS, INC.**

(TAOYUAN PLANT CPBG) 252, SAN YING ROAD, KUEISAN INDUSTRIAL ZONE, TAOYUAN SHIEN, 333, TAIWAN, R.O.C.  
 TEL: 886-3-3591968; FAX: 886-3-3591991  
<http://www.deltaww.com>